

ACCME Accredited

Our Continuing Medical Education (CME) program is fully accredited with commendation by the Accreditation Council for Continuing Medical Education (ACCME) and has been deemed "exemplary," a designation reserved for the best providers in America.

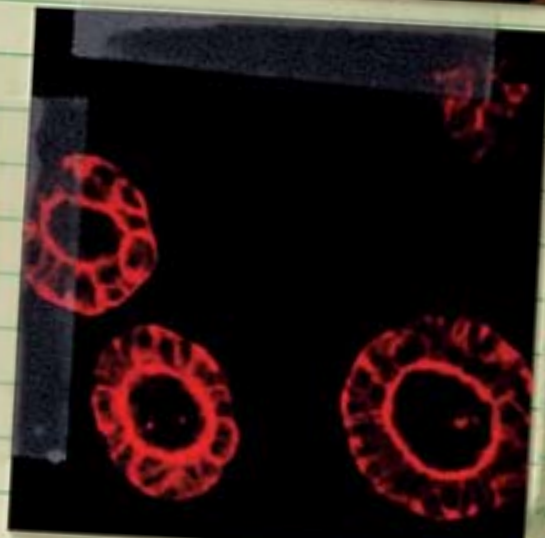
Founding Member

City of Hope is a founding member of the National Comprehensive Cancer Network, which continually develops and updates nationwide guidelines for the standards of treatment in cancer. Our CME courses are informed by these guidelines, helping physicians improve their practices and close performance gaps.

TOP 2% AMONG
ACCME PROGRAMS

TEACHING PHYSICIANS

- PROMOTES NATIONAL REPUTATION
- FULFILLS COMPREHENSIVE CANCER CENTER REQUIREMENTS
- GENERATES PATIENT REFERRALS
- ENCOURAGES CLINICAL TRIAL ENROLLMENTS



CONTINUING MEDICAL EDUCATION

Learning new skills with continuing education

Practicing medicine well takes a commitment to continuous education. And it cannot come from books and journals alone: Just as in medical school, developing and maintaining expertise requires hands-on experience and instruction directly from seasoned professionals.

Because prevention, diagnosis and treatment standards evolve as a result of research findings, physicians must refresh their knowledge and master new techniques regularly. Medical societies now stress lifelong learning to ensure that their members keep abreast of developments and change their practices for the better. **Continuing medical education (CME) is essential to improving performance in health care — a national priority — and City of Hope is a leader in CME.**

To keep community physicians up to date on developments emerging from major clinical trials, City of Hope sponsors national educational events. In 2010, our CME conferences addressed gastrointestinal cancers, women's cancers and treatments for hematologic malignancies, as well as the Rachmiel Levine Diabetes and Obesity Symposium.

Medical professionals located closer to City of Hope also attend frequent CME courses in Southern California. Regional meetings in

2010 covered progress in the treatment of multiple myeloma, colorectal cancer, lymphoma, kidney cancer and cancers of the head and neck.

Grand rounds are a mainstay of medical education. Through these sessions, doctors, residents and medical students explore real cases and discuss treatment options. **City of Hope continues this tradition with a regular series in which staff physicians and outside medical experts gather to discuss patients and cases of special interest.**

City of Hope's CME program employs new technologies to ensure that its educational programs are accessible and effective. An audience response system allows physicians and other clinicians to answer questions during presentations with the click of a button, promoting engagement and understanding. Other advances include accredited educational programs online. Medical webinars are in development. Additional training, research and internship programs are available in many fields including oncology nursing, genetics, radiation therapy and pharmacy.



"The Community Cancer Genetics and Research Intensive Course taught me how to evaluate patients for hereditary breast and ovarian cancer. In Laredo, Texas, where I work, I discovered a family that had 25 members at risk, but since we began screening them and providing appropriate interventions, no one has died from either cancer. It's made a change in me and my community, and if I hadn't had the opportunity to come to City of Hope, it never would have happened."

CME participant: Surgeon Gary W. Unzeitig, M.D.